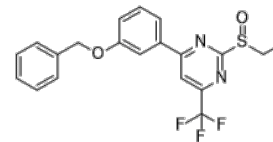


Product Name : BETP
Cat. No. : PC-23495
CAS No. : 1371569-69-5
Molecular Formula : C₂₀H₁₇F₃N₂O₂S
Molecular Weight : 406.42
Target : Glucagon Receptor
Solubility : 10 mM in DMSO



Biological Activity

BETP is a potent, allosteric activator/agonist of glucagon-like peptide-1 (GLP-1) receptor with EC₅₀ of 0.66 and 0.755 μM for human and rat GLP-1 receptor, respectively, also inhibits importin α1 import and importin β1 dependent cargo import with EC₅₀ of μM uM in phenotypic importin α1 translocation assays.

BETP increases oxyntomodulin binding affinity for the GLP-1 receptor and enhances oxyntomodulin-mediated GLP-1 receptor signaling as measured by activation of the α subunit of heterotrimeric G protein and cAMP accumulation.

BETP exhibits glucose-dependent insulin secretion in rats following i.v. (but not oral) administration.

BETP is a positive allosteric modulator at the glucagon-like peptide-1 receptor (GLP-1R), covalently modifies cysteines 347 and 438 in GLP-1R.

References

Sloop KW, et al. *Diabetes*. 2010 Dec;59(12):3099-107.

Willard FS, et al. *Mol Pharmacol*. 2012 Dec;82(6):1066-73.

Vercruyse T, et al. *Commun Biol*. 2024 Nov 23;7(1):1560.

Nolte WM, et al. *Nat Chem Biol*. 2014 Aug;10(8):629-31.

Caution: Product has not been fully validated for medical applications. Lab Use Only!

E-mail: tech@probechem.com